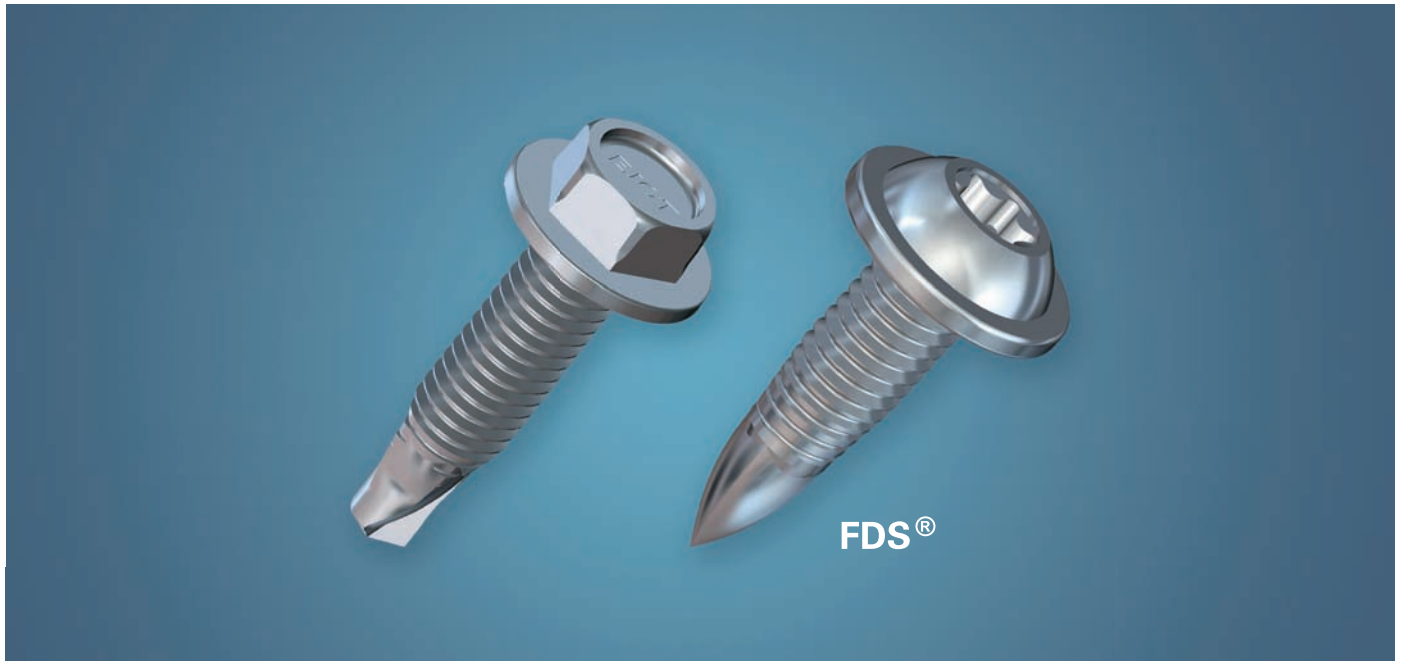


EJOT FDS® Fastener

适应于连接高强度钢板的自攻螺钉

EJOT FDS®



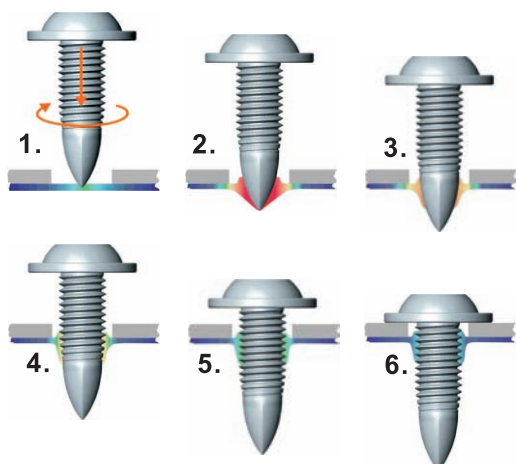
EJOT FDS® 的优点

- ◆ 高强度螺纹连接
- ◆ 对于重叠孔和定位孔都可以安装
- ◆ 螺丝成型时无废屑
- ◆ 安装扭矩和破坏扭矩之间空间大，安全系数高。
- ◆ 高剪切力和拔出力
- ◆ 可将不同材质的薄板组合在一起
- ◆ 高破坏扭矩和高抗振性
- ◆ 可用标准机械螺丝重复组装
- ◆ 可重复组装

Benefits of the EJOT FDS®

- ◆ *High strength screw joint, without preparations like punching or drilling*
- ◆ *No problems regarding hole overlapping of clearance and pilot hole*
- ◆ *No chips during thread forming*
- ◆ *Safety margine concerning a large distance between installation and stripping torque*
- ◆ *High shearing strength and pull-out force*
- ◆ *Assembly in different sheet surface is possible*
- ◆ *High break loose torque and vibration resistance*

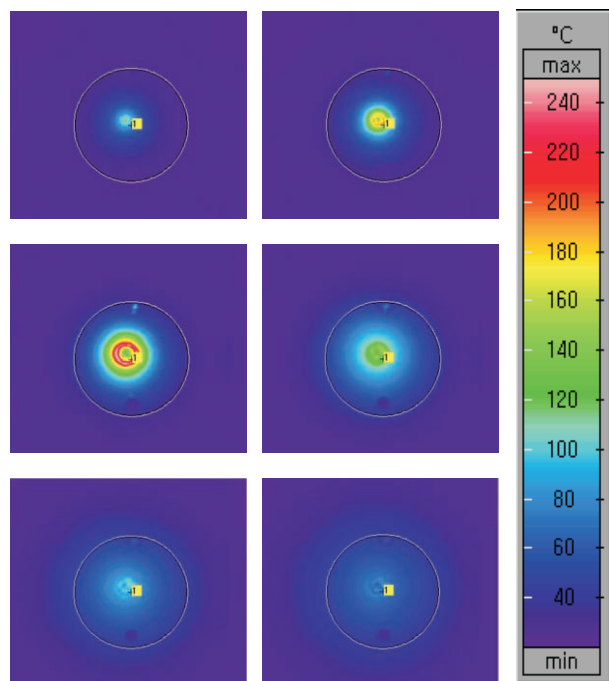
FDS® 安装步骤 Stages of the FDS® assembly



- 1.通过快速预热的金属板材
- 2.穿透金属板
- 3.挤出成型
- 4.机械螺纹无屑成型
- 5.安装
- 6.按预设扭矩拧紧

- 1.Warming up the sheet metal by axial end load and high speed
- 2.Penetration into the material
- 3.Forming of the extrusion
- 4.Chipless forming of a female machine thread
- 5.Installation
- 6.Tightening with the pre-set torque

FDS® 组装时的温度 Temperatures during a FDS® assembly



- 1.加热
- 2.穿透
- 3.翻边成型
- 4.螺纹成型
- 5.所有螺纹啮合
- 6.拧紧

- 1.Heating
- 2.Penetrating
- 3.Through draught forming
- 4.Thread forming
- 5.Engagement of full threads
- 6.Tightening

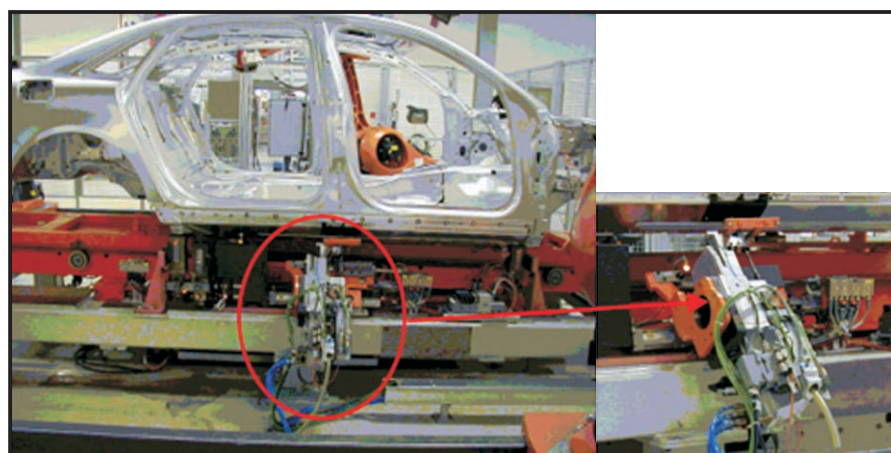
紧固参数:

线材: St 14 钢板0.8mm (无定位孔)
 螺丝: FDS® M3,5
 转数: 2300 rpm

Fastening parameter

Material 0,8mm steel plate St 14
 (without pilot hole)
 Screw FDS® M3,5
 driver speed 2300 rpm

应用案例 Applications Example



奥迪R8:

- ◆ 全自动机械手车身组装生产线
- ◆ R8单车用量350PCS FDS® M5螺丝
- ◆ 车身无定位孔和排屑孔
- ◆ 铝钣金厚度: 1.5 ~ 3.5mm

Audi R8:

- ◆ Full automated robot assembly in the 'body inwhite' production
- ◆ Assembly of 350 FDS® M5 screws
- ◆ Without pilot and clearance hole into:
- ◆ Aluminiumprofile: thickness 1,5 up to 3,5mm